

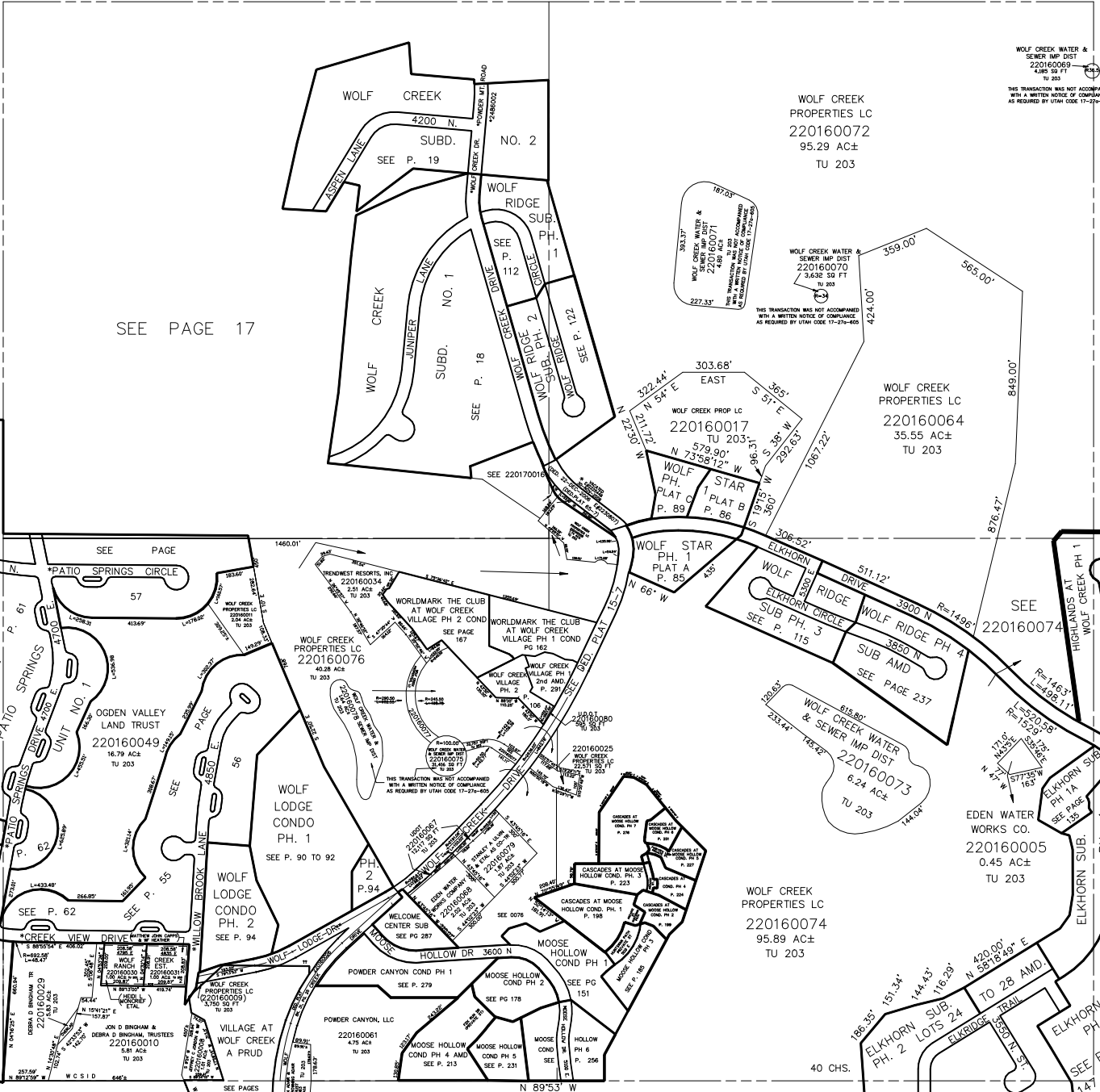
# SECTION 22, T.7N., R.1E., S.L.B. & M.

IN WEBER COUNTY

SCALE 1" = 400'

TAXING UNIT: 203

SEE PAGE 6



SEE PAGE 15

SEE PAGE 17

SEE P. 58

SEE P. 59

SEE P. 15

SEE P. 61

SEE P. 62

SEE P. 218

SEE P. 62

SEE P. 62

SEE P. 62

SEE P. 62

SEE P. 62

SEE P. 62

SEE P. 62

SEE P. 62

SEE P. 62

SEE P. 62

SEE P. 62

\* STREET NAME CHANGE  
19-JAN-95 1744-1014  
E #1329313

\*\* STREET NAME CHANGE  
ORDINANCE NO 2009-08  
E #2396736

SEE PAGE 21

SEE PAGE 20

SEE PAGE 130

SEE PAGE 129

SEE PAGES 147 & 148